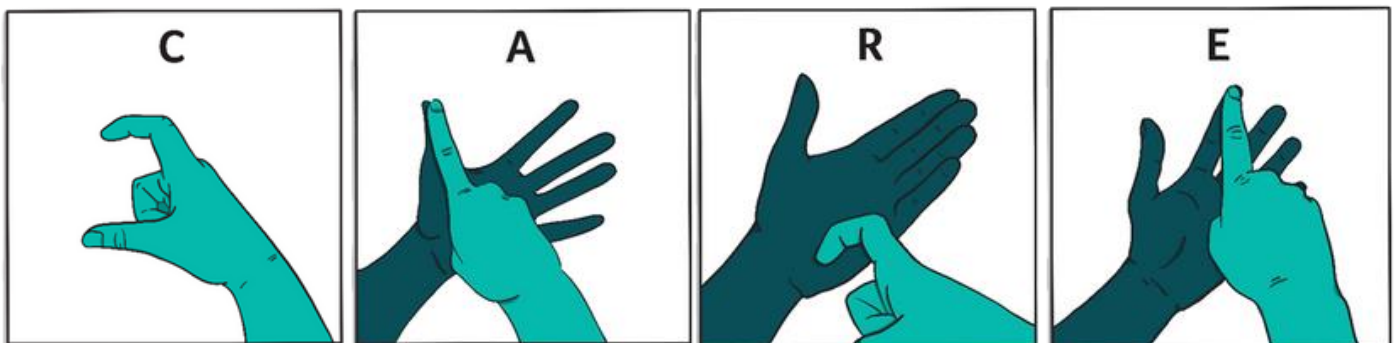


Statement of Purpose

Children and Young Person



Our Aim

Our aim is to prepare you to be happy, healthy, and prepare you for the world of work, living independently or in supported accommodation. We believe with the right support and motivation anything is possible.



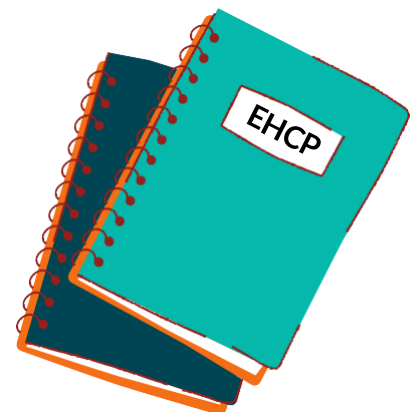
Staying in Residential

When you stay here in residential the care team will help you develop your independent living skills to help prepare you for adulthood.

To stay here, you must have an Education, Health, and Care Plan

This plan describes your strengths and interests and what support you need at school or college, and home.

You can enjoy a wide range of activities here in Residential. We have a great Deaf community, with evening and weekend social activities helping to develop sign language and communication skills.



Activities we provide are:

Visit to the local parks



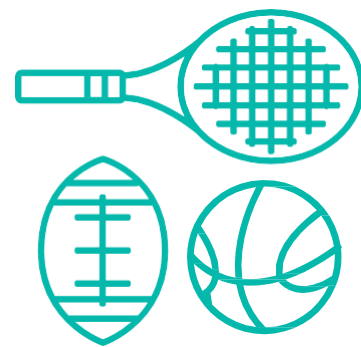
Football Training (From the local Deaf Club)



Swimming



Sports Club



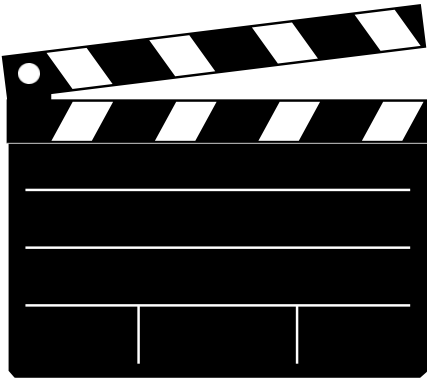
Reading Club



Homework Club



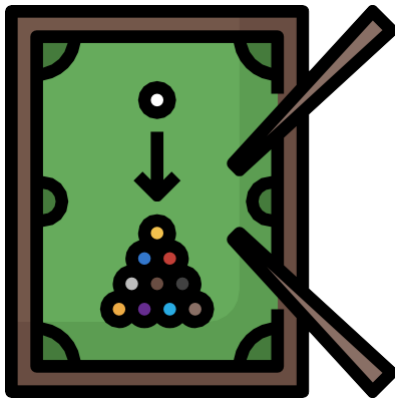
Movie Night



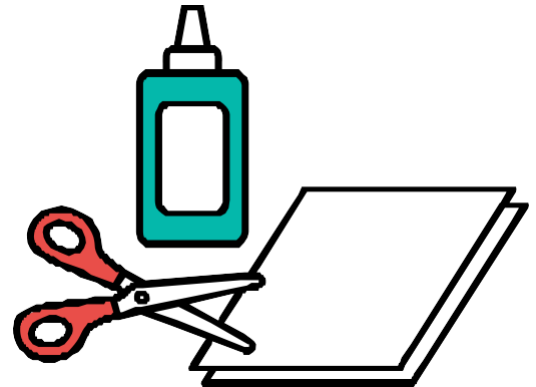
Bowling



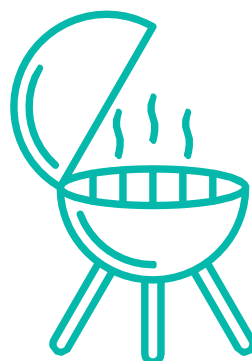
Pool table, air hockey table
and football table
competitions



Arts and
Craft Club



BBQ's



Driving theory lessons



Walks on the beach



Trips to theme parks



Park run training



And much more ...

Equal Opportunities

the Deaf Academy everyone is highly valued, and we are committed to ensuring equality of education and residential care.

as well as opportunity for all members of the Academy's community no matter what age, gender or sexual orientation, religion, ethnicity, disability, personal circumstances, or any other protected characteristic.

We WILL provide a secure environment for ALL children and young people and challenge discrimination.



Residential Accommodation

Residential Care at the Academy provides a safe and nurturing environment which allows you to become independent and develop your Deaf identity.



Over three floors, each flat contains a kitchen, a living room, extra wide hallway, two communal bathrooms that can cater for disabilities, and individual bedroom for each young person.

You are encouraged to bring pictures and posters to put on your walls in their rooms to personalise them. Your Bedrooms are private and you are given your own key

You will also be given a ID card so you can enter the main gates and Residential building.

Our kitchens are accessible by all and are the perfect place to learn essential cooking skills, dinner classics and socialise whilst cooking together.



Living rooms are homely, and a nice space to unwind after a busy day learning.



Staff Support

The assistant principal for care looks after Residential Care his name is **James Heaver** and is happy to help you with any questions you have.



The Deputy Residential Manager also supports Residential Care and her name is **Olivia Hills**



We have four shift leaders on opposite shifts and are happy to help you at all times while in Residential Care.



His name is **Darren Mckeown**, he works on the blue shift.



Her name is **Esther Jukes** she works on the green shift.



Her name is **Jessica Balch**, she works on the on the Monday to Friday shift



Her name is **Rebecca Jameson**, she works on the weekend shift

Making a complaint

If you are unhappy about something and want to complain you can do any of these things.

Talk to your parents or the person who looks after you.

Tell one of the shift leaders.

Tell your Tutor or Key worker.



Tell the Assistant Principal for Care
James Heaver





Tell the Head of Care, **Natasha Young**

Tell the Deputy Residential Manager
Olivia Hills



Tell the Principal Sylvan Dewing.



Tell Alistair our Governor for
safeguarding.
Alistair Dewhirst
Alistair.Dewhirst@devon.gov.uk



Tell our independent visitor
Ray Elphick
elphick@compassconsultancyservices.com



Tell our independent visitor
Marie Tucker
marie.tucker@cicadaservices.co.uk

Communications/ Meetings

All Residential staff are trained to look after you and have meetings by managers to ensure they are looking after you appropriately. Staff have or a learning BSL to communicate with you effectively.



Care staff have Handover/shift planning meetings when they start their shift to help plan your care and activities that you have said you would like to do.

Teachers and Education staff also tell us how your day has been and record this on your 'personal daily logs' Care staff also add their comments about the things you have done the night before.

Managers and the care team meet every 6 weeks to look at what is going well and ways we can improve things.

The Welfare team meet weekly to make sure that everyone is safe and ways we can support any behaviour difficulties.



Contact with Parents/Carers



We have WIFI in all flats. This means you can contact family friends. If unsure staff can support you with this.



Your flat has a mobile phone which is carried by staff, and you can contact them by Facetime or text. Your parents can also contact staff on this number.

When you stay in Residential you will be allocated a keyworker.

Care staff will contact your parents/carers and inform them about how things are going. If you are over 18, we will ask your permission first to do this.

Keyworker

When here you will be given a key worker, they will also contact your family/carers and update them on your progress here in Residential.

How will we share things with your family?



We will use telephones, Teams, Zoom, Facetime, and meetings to speak to your parents/carers.

We will send your parents/carers reports on your progress.



zoom

Advocacy

We also have an independent person who is an advocate for deaf people, she visits the Academy and Residential care every two weeks.

They can

- Help you to understand what is going on
- Help you to be involved in decisions that are important to you
- Help you to make choices
- Help you to understand information, guidance and advice in BSL
- Help you to tell your wishes and views
- Help you to understand your rights
- Help you to access services that support you
- Help you to make complaint

Kristy Cooper
BSL Advisor and Advocate



Email: kristy@accesscommunication.co.uk

Mobile: 07592631203

Telephone: 01803 302431



Website: www.accesscommunication.co.uk

Annual Review

You will also receive a review meeting each year to review how things are going and to see if you want to return the next year. You will be supported by your keyworker and teacher with this meeting.



Keeping you safe

James Heaver is the Designated Safeguarding Lead (DSL) and is supported by two deputies and a three Welfare Officers.

Their responsibility is to keep you safe from harm.

This is overseen by Alistair Dewhirst who is the Governor for safeguarding.

We set high safeguarding standards so young people are safe to thrive socially, emotionally, and academically.

You can also contact or ask to contact other people who can help:

Childline : <https://www.childline.org.uk/>

Children's commissioner:

<https://www.childrenscommissioner.gov.uk/>

Ofsted:

<https://www.gov.uk/government/organisations/ofsted/about/complaints-procedure>

childline

ONLINE, ON THE PHONE, ANYTIME
[childline.org.uk](https://www.childline.org.uk) | 0800 1111

 **CHILDREN'S
COMMISSIONER**


Ofsted
raising standards
improving lives